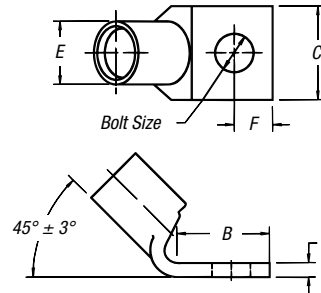


## Compression Connectors for Copper Conductor

### One-Hole Lugs — 45° Standard Barrel 600V to 35kV

**Material:** High-Conductivity  
Wrought Copper

**Finish:** Electro Tin Plate



CAT. NO.	CODE	WIRE SIZE		DIMENSIONS (IN.)						DIE CODE	DIE COLOR
		FLEX CLASS G, H, I, K, M†	BOLT SIZE	B	C	D	E	F			
54104UF	#8 AWG	23 Navy	#10	.50	.39	.08	.25	7/32	21	RED	
54130UF		#8 Weld	1/4	.61	.45	.07	.25	1/4	21		
54131UF		37/24 = 14.9 kcmil	5/16	.64	.56	.05	.25	5/32	21		
54132UF	#6 AWG	30 Navy	#10	.53	.44	.07	.31	7/32	24	BLUE	
54105UF		#6 Weld	1/4	.53	.44	.07	.31	7/32	24		
54135UF		61/24 = 24.6 kcmil	5/16	.67	.60	.07	.31	5/16	24		
54136UF		133/.014	3/8	.67	.60	.07	.31	5/16	24		
54138UF	#4 AWG	#4 Weld	#10	.60	.55	.09	.37	1/4	29	GRAY	
54106UF		40-50 Navy	1/4	.60	.55	.09	.37	1/4	29		
54139UF		91/24 = 36.7 kcmil	5/16	.66	.61	.07	.37	5/16	29		
54140UF		133/.0177	3/8	.66	.61	.07	.37	5/16	29		
256-30695-264UF		49/.029	1/2	1.40	1.00	.06	.37	1/2	29		
54107UF	#2 AWG	60 Navy	1/4	.65	.59	.11	.41	1/4	33	BROWN	
54142UF		125/24 = 50.4 kcmil	5/16	.88	.59	.11	.41	3/8	33		
54143UF		#3 Weld	3/8	.80	.59	.11	.41	3/8	33		
54145UF	#1 AWG	75 Navy, #2 Weld	1/4	.65	.68	.11	.47	1/4	37	GREEN	
54147UF		150/24 = 60.5 kcmil	5/16	.93	.68	.11	.47	3/8	37		
54148UF		175/24 = 70.6 kcmil	3/8	.98	.68	.11	.47	3/8	37		
54150UF		133/.0223	1/2	1.25	.76	.11	.47	1/2	37		
54152UF	1/0 AWG	100 Navy	1/4	.65	.75	.13	.52	1/4	42	PINK	
54153UF		#1 Weld	5/16	.88	.75	.13	.52	3/8	42		
54109UF		225/24 = 90.8 kcmil	3/8	.93	.75	.13	.52	3/8	42		
54155UF	2/0 AWG	133/.0254	1/2	1.25	.75	.13	.52	1/2	42	BLACK	
54157UF		125 Navy	1/4	.65	.83	.13	.57	1/4	45		
54158UF		1/0 Weld	5/16	.88	.83	.13	.57	3/8	45		
54110UF		275/24 = 111 kcmil	3/8	.93	.83	.13	.57	3/8	45		
54160UF	3/0 AWG	427/.0155, 133/.0282	1/2	1.25	.83	.13	.57	1/2	45	ORANGE	
54162UF		150 Navy, 2/0 Weld	1/4	.65	.92	.13	.63	1/4	50		
54163UF		325/24 = 131 kcmil	5/16	.88	.92	.13	.63	3/8	50		
54111UF	4/0 AWG	133/.0316, 259/.0227	3/8	.93	.92	.13	.63	3/8	50	PURPLE	
54165UF		427/.0177	1/2	1.25	.92	.13	.63	1/2	50		
54167UF	4/0 AWG	200 Navy	1/4	.65	1.03	.14	.70	1/4	54	YELLOW	
54168UF		3/0 Weld	5/16	.87	1.03	.14	.70	3/8	54		
54112UF		450/24 = 182 kcmil	3/8	.93	1.03	.14	.70	3/8	54		
54170UF		703/.0154	1/2	1.25	1.03	.14	.70	1/2	54		
58161UF	4/0 AWG	4/0 Weld	1/4	.78	1.25	.15	.79	3/8	62	YELLOW	
58162UF		550/24 = 222 kcmil	5/16	.88	1.25	.15	.79	3/8	62		
58163UF		133/.0399	3/8	.93	1.25	.15	.79	3/8	62		
58165UF		259/.0286	1/2	1.25	1.25	.15	.79	1/2	62		
58166UF		637/.0183	3/8	1.58	1.25	.15	.79	3/8	62		

† Contact Technical Services for specific stranding listings

Tooling: pp. F-80-F-100

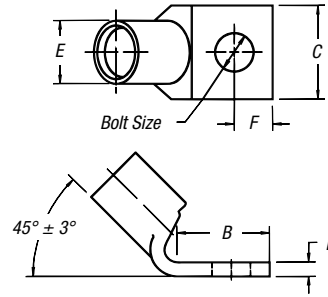
Die Selector Chart: pp. F-101-F-104

## Compression Connectors for Copper Conductor

### One-Hole Lugs — 45° Standard Barrel 600V to 35kV (continued)

**Material:** High-Conductivity  
Wrought Copper

**Finish:** Electro Tin Plate



CAT. NO.	WIRE SIZE			DIMENSIONS (IN.)					DIE CODE	DIE COLOR
	CODE	FLEX CLASS G, H, I, K, M†	BOLT SIZE	B	C	D	E	F		
54172UF			¼	.65	1.13	.14	.77	¼	62	YELLOW
54173UF	250 kcmil	250 Navy	⅝	.88	1.13	.14	.77	⅝	62	
54174UF			¾	.93	1.13	.14	.77	¾	62	
54113UF			½	1.25	1.13	.14	.77	½	62	
58168UF		250 Weld, 650/24 = 262 kcmil, 259/.0311, 703/.0189	½	1.25	1.25	.15	.85	½	66	WHITE
54178UF			⅝	.88	1.25	.15	.85	⅝	66	
54179UF	300 kcmil	300 Navy	¾	.93	1.25	.15	.85	¾	66	
54114UF			½	1.25	1.25	.15	.85	½	66	
54181UF			⅝	1.58	1.25	.15	.85	⅝	66	
58171UF		300 Weld, 259/.034, 427/.0265, 889/.0183 775/24 = 313 kcmil	½	1.25	1.36	.18	.93	½	71	RED
54115UF06			⅝	1.25	1.36	.18	.93	½	71	
54115UF	350 kcmil	350 Navy	½	1.25	1.36	.18	.93	½	71	
54183UF			⅝	1.58	1.36	.18	.93	⅝	71	
58174UF		350 Weld, 259/.0368, 427/.0285, 703/.0224, 889/.0201	½	1.25	1.61	.22	1.09	½	76	BLUE
54116UF			½	1.25	1.41	.17	.96	½	76	
54185UF	400 kcmil	400 Navy	⅝	1.58	1.41	.17	.96	⅝	76	
58177UF06		400 Weld	¾	1.31	1.61	.22	1.04	¾	80	
58177UF		925/24 = 373 kcmil	½	1.25	1.61	.22	1.04	½	80	N/A
54118UF			½	1.25	1.61	.22	1.10	½	87	BROWN
54187UF	500 kcmil	500 Navy	⅝	1.58	1.61	.22	1.10	⅝	87	
58180UF		1100/24 = 444 kcmil, 450, 1127 450, 4522	⅝	1.58	1.75	.24	1.20	½	94	GREEN
54120UF	600 kcmil		⅝	1.58	1.75	.24	1.20	½	94	
54122UF	700 kcmil		⅝	1.58	1.84	.23	1.26	½	99	PINK
58182UF		1325/24 = 535 kcmil	½	1.69	1.81	.28	1.25	⅜	99	
58182UF		427/.0342	⅝	1.58	1.81	.28	1.25	⅝	99	
54123UF	750 kcmil	600 Flex 427 Str.	⅝	1.58	1.94	.27	1.33	⅝	106	BLACK
58184UF		1600/24 = 646 kcmil	⅝	1.58	1.94	.27	1.33	⅝	106	
54124UF	800 kcmil	800 Navy	⅝	1.58	2.01	.27	1.38	⅝	107	ORANGE
54126UF	900 kcmil	1925/24 = 777 kcmil, 900 Navy	⅝	1.58	2.17	.31	1.50	⅝	115	YELLOW
54128UF	1000 kcmil	1000 Navy	⅝	1.58	2.27	.30	1.55	⅝	125	N/A

† Contact Technical Services for specific stranding listings

Tooling: pp. F-80-F-100

Die Selector Chart: pp. F-101-F-104